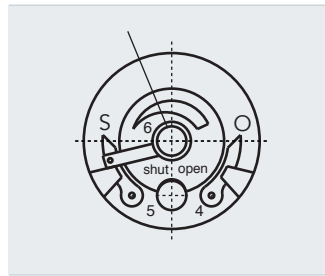
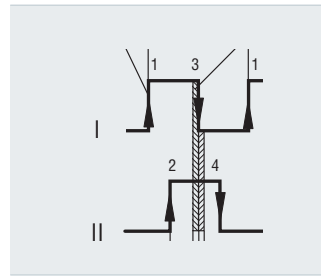


RAYCONTROL  
ENGINEERS in Singapore  
+65 88103634  
+65 88491139  
KRACHT@raycontrol.com

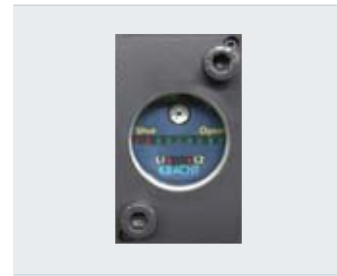
### Valve Position Indicator VOLUMEK



### Valve Position Measuring Instrument VOLUTRONIC<sup>®</sup>



### Valve Position Indicator with Encoder VOLUCODEC



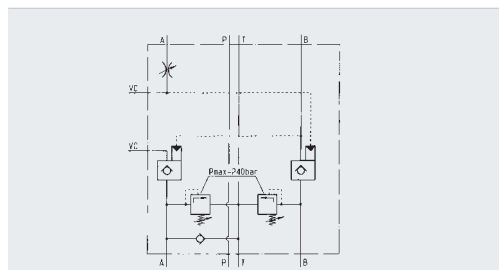
Design	Gear type volume counter	Gear type volume counter	Gear type volume counter
max. flow rate	02: 4 l/min / 1.1 gal/min 04: 7 l/min / 1.8 gal/min 5: 150 l/min / 40 gal/min	0.25 up to 10 l/min 0.7 up to 2.6 gal/min	02: 4 l/min / 1.1 gal/min 04: 7 l/min / 1.8 gal/min
max. working pressure	02 / 04: 200 bar / 2901 psi 5: 300 bar / 4351 psi	160 bar / 2321 psi	02 / 04: 160 bar / 2321 psi
Display	mechanical	by downstream electronic possible	LED
Current-independent display	Yes	-	No
Current-independent position detection	Yes	No	Yes
Leakage detection	Yes	by downstream electronic possible	Yes
Reset function	at slipping clutch	by downstream electronic possible	Yes
Calibration to actuator size	by gear reducing	by downstream electronic possible	free programmable
Flow direction	must be defined	A-B / B-A	free programmable
Error message	No	by downstream electronic possible	Yes

### Hydraulic Manifolds

#### HB 4 0311

- Description
- double pilot operated check valve for holding the actuator position
  - two pressure relief valves for limiting the pressure caused by increased temperature
  - throttle valve in port A for speed regulation of the actuator
  - check valve for filling the piping to avoid wrong indications when temperature fluctuates

#### Schematic



#### HB 4 0324

- check valve in P for holding the actuator position when switching parallel actuators
- check valve in T to avoid indicator fluctuations due to pressure pulsation
- one temperature pressure relief valve for limiting the pressure caused by increased temperature
- throttle valve in port A for speed regulation of the actuator
- check valve for filling the piping to avoid wrong indications when temperature fluctuates

